

See discussions, stats, and author profiles for this publication at: <https://www.researchgate.net/publication/319466304>

# Sorption of Methylene Blue Dye from Aqueous Solution Using an Agricultural Waste

Article · January 2017

DOI: 10.21767/2471-9889.100017

CITATION

1

READS

50

3 authors:



**Abdelkarim Seghier**

Centre universitaire de Relizane, Algérie + laboratoire des sciences, technologies e...

4 PUBLICATIONS 15 CITATIONS

SEE PROFILE



**HADJEL Mohammed Hadjel**

Université des Sciences et de la Technologie d'Oran Mohamed Boudiaf

52 PUBLICATIONS 175 CITATIONS

SEE PROFILE



**Nouredine Benderdouche**

Université Abdelhamid Ibn Badis Mostaganem

54 PUBLICATIONS 809 CITATIONS

SEE PROFILE

Some of the authors of this publication are also working on these related projects:



MEA purification by activated carbon [View project](#)



Valorization of olive stones into a granular activated carbon for the removal of Methylene blue in batch and fixed bed modes [View project](#)

# Sorption of Methylene Blue Dye from Aqueous Solution Using an Agricultural Waste

Seghier Abdelkarim<sup>1</sup>,  
Hadjel Mohammed<sup>1</sup> and  
Benderdouche Nouredine<sup>2</sup>

## Abstract

Millions of tons of prickly (peel) bark of cactus fruit (PBCF) are produced per year. This work is to use this agricultural waste as a low cost biomaterial for the treatment of water contaminated with organic pollutant. PBCF has been characterized by several analytical techniques i.e. SEM, EDS and FTIR spectroscopy. In addition, the determination of iodine value which gives information on area surface. PBCF were used to remove Methylene blue (MB) from the aqueous solution. Experiments were carried out as function of contact time, initial dose of PBCF, initial pH aqueous solution, initial concentration of MB (90-2000 mg L<sup>-1</sup>), and temperature (20-40°C). The pseudo-second-order was the best applicable model to describe the sorption of MB by Prickly bark of cactus fruit. The equilibrium sorption data of Methylene blue by Prickly barks of cactus fruit were analysed by Langmuir and Freundlich models. The preliminary results indicate that the Langmuir model provides the best correlation of the experimental data with an important capacity of sorption of Methylene blue onto Prickly bark of cactus fruit (222.22 mg g<sup>-1</sup>). Moreover the parameters of the Freundlich model showing that the sorption of MB onto PBCF is favourable. Finally, the sorption capacity of PBCF is compared to those of other sorbents materials reported in the literature.

**Keywords:** Sorption; Basic dye; Bio-sorbent; Isotherms; Agricultural waste

**Received:** April 12, 2017; **Accepted:** May 02, 2017; **Published:** May 08, 2017

## Introduction

Dyes have been excessively released into the environment due to rapid industrialization and have created a major global concern. They are chemical compounds which can connect themselves to surfaces or fabrics to impart colour. The majority of dyes are complex organic molecules and are required to be resistant to many things such as the action of detergents [1]. They are often found in industrial wastewaters, which originate from textile, leather tanning, paper, cosmetics, plastics, rubber, food processing, manufacturing and printing dye activities [1].

Removal of dyes from industrial wastewater is an important problem due to the characteristics of these dyes, as that they are non-degradable and therefore persistent [2]. Moreover, most of the pollutants are toxic to living organisms and they have a large influence on the photosynthetic activity in aquatic biota [3]. To respect the environmental norms, the toxic materials should be removed from wastewater before its disposal [4].

Methylene blue is one of the most dyes found in the waters discharged by industrial activities and histologic microbiologic [5]. Severe toxicity is imposed by this pollutant: toxicity in premature

neonate [5] and toxicity on the central nervous system [6]. To deal with the problems caused by the dyes including Methylene Blue, several studies were devoted to their elimination such as: adsorption on activated carbon [7-9], coagulation/flocculation [10,11], poly-electrolyte promoted [12,13], ozonation [14], nano-filtration [15-17], photo-catalytic degradation in advanced oxidation process [18,19], electrochemical treatment [20,21] and biological treatment in particularly enzyme [22-31].

According to the literature, adsorption on activated carbon remain among the most and easy technical to implement [32]. Several studies have been carried out in this area, namely: cotton [33], corn [34], silk worm cocoon [35].

- 1 Department of Industrial Organic Chemistry, University of Science and Technology - Mohamed BOUDIAF of Oran, Oran, Algeria
- 2 Laboratory of Structure, Elaboration and Application of Molecular Materials (SEA2M), University of Mostaganem, Mostaganem, Algeria

## Corresponding author:

Seghier Abdelkarim

✉ krimouvert@yahoo.fr, abdelkarim.seghier@univ-usto.dz

Laboratory of Sciences, Technologies and Process Engineering, Department of Industrial Organic Chemistry, Faculty of Chemistry, University of Science and Technology - Mohamed BOUDIAF of Oran, BP 1505 El Mnaouar, Bir El Djir 31000 Oran, Algeria.

Tel: +213 542161512

**Citation:** Abdelkarim S, Mohammed H, Nouredine B. Sorption of Methylene Blue Dye from Aqueous Solution Using an Agricultural Waste. Trends Green Chem. 2017, 3:1.

However, the activation (chemical or physical) of carbon increases the cost of treatment; also their regeneration is a delicate operation [36].

To this end, new biomaterials subject of much research in recent years such as the adsorption of Methylene Blue on biomaterial using cactus tree [2]. As yet this technique was not applied to prickly bark of cactus fruit (peel), hence never reported in the literature according to our knowledge.

## Experimental

In this work prickly bark of cactus fruit was used as bio sorbent. The raw material was dried in sunlight for 15 days at an average daylight temperature of 40°C, washed several times with distilled water, dried at 40°C, grounded to powder and sieved conserving only particles having a size not exceeding 315 nm. The product obtained noted (PBCF). To study the morphology of the PBCF surface its structure was observed using a HIROX SH 400 M SEM-EDS BRUKER apparatus. To detect the functionality present in (PBCF), FTIR spectroscopy studies using the PerkinElmer Spectrum Two FTIR with UATR sampling accessory. The sorption capacity of materials to the dyes can be examined by calculating the iodine value [37]. Generally adsorbents with a high iodine number have a high surface area and are suitable for adsorbing small compounds [37]. For this propose the PBCF surface area was studied by measuring their iodine number ( $\text{mg g}^{-1}$ ) according to the standard procedure [38] by using the 0.1 N standardized iodine solution. Sample volumes of 100 ml of the iodine solution were treated with 1 g of the material. After equilibrium, the remaining iodine in the supernatants was titrated with 0.1 N sodium thiosulfate solution. The Iodine Number was reported as the amount of iodine adsorbed per gram of adsorbent at a residual iodine concentration of 0.02 N.

The 90 g/L concentration Methylene blue solution (initial pH) used to determine the equilibrium contact time. Batch process was carried out at  $20 \pm 2^\circ\text{C}$  (ambient laboratory temperature). 25 ml of Methylene blue solution was separately mixed with 0.1 g of the Prickly bark of cactus fruit (PBCF). The mixtures were put into the shaking batch (400 rev/min shaking rate) during different time intervals, ranging from 10 to 360 min, then the solids particles were removed by centrifugation then the Methylene blue concentration in aqueous solution was determined with a SPECORD 200 PLUS –ANALYTIK, JENA- UV-visible spectrophotometer at 664 nm using a cuvette of 10 mm wide. The sorption capacities of MB onto PBCF were calculated by [39]:

$$q_t = (C_0 - C_e) V/W \quad (1)$$

Where  $q_t$  is the sorption capacity ( $\text{mg g}^{-1}$ ) at any time;  $C_0$  and  $C_e$  ( $\text{mg L}^{-1}$ ) are respectively the initial and final adsorbate concentration;  $V$  is the volume of the aqueous solution (L);  $W$  is the mass of the bio sorbent used (g).

Under the same operating conditions (initial pH, ambient laboratory temperature and 400 rpm shaking rate), effect of PBCF mass on MB percentage removal at 100  $\text{mg L}^{-1}$  and 0.05-0.3 g of adsorbent were studied.

Effect of pH was investigated by mixing 0.1 g of PBCF with 25 ml Methylene blue solution ( $250 \text{ mg L}^{-1}$ ), pH of the medium was adjusted to 4-12. The mixtures were stirred during contact time obtained from kinetic study at 400 rpm and ambient laboratory temperature.

The isotherm of bio sorption experiments were performed in a rotary shaker at 400 rpm using 250 ml Erlenmeyer flasks containing 25 ml of different MB concentrations at initial pH. After 60 min of contact (according to the kinetic study), with 0.1 g PBCF biomass, the concentrations of MB equilibriums and sorption capacities were determined by the same methods and devices already reported beforehand (kinetics study).

These isotherms were studied for temperatures of 20, 30 and 40°C.

## Results and Discussion

### Characterization of the bio-sorbent

Following SEM image represented by **Figure 1**, the surface of Prickly bark of cactus fruit is full of cavities distributed on a heterogeneous surface. Similar morphology was on the external surface for cactus tree [2]. Moreover and according the literature [3,37,40], this sorbent has a high surface area view its great iodine index value reaches  $436 \text{ mg g}^{-1}$ . The elemental composition of the material in particular oxygen and carbon is illustrated by the spectrum EDS of **Figure 2**. The analysis reveals the presence of oxygenated functional groups.

The ATR-FTIR spectra (**Figure 3**) indicates an intensive OH peak at  $3337.26 \text{ cm}^{-1}$  [3,2], the peaks alkyl at  $2850.87$  and  $2918.03 \text{ cm}^{-1}$  are assigned to aliphatic C-H stretching bonds [3, 41], The bands, at  $1616.28$  and  $1729.61 \text{ cm}^{-1}$  due to the presence of C=O bonds in carboxylate functional groups and carboxylic acid respectively [3,41,42], the peak at  $1424.49$ , which is identical to the presence of –C-H stretching in saturated aliphatic hydrocarbons (alkanes) with  $\text{sp}^3$ -hybridizations [41], the band to  $1374.23 \text{ cm}^{-1}$ , can be assigned to the vibration of elongation of the phenolic OH [2], the peak appeared to  $1315.72 \text{ cm}^{-1}$  due to C-O stretching in esters, ether, phenol or carboxylic groups [42]. Finally the peaks at  $1027.74$ - $1157.27 \text{ cm}^{-1}$  can be ascribed to C-N stretching in aliphatic amines [41].

### Contact time

The equilibrium time for the sorption of MB onto PBCF (**Figure 4**) was found to be 60 min. Any intra particular diffusion was noted during the sorption experiments that should lead to a decrease in the slope between the fast initial and the equilibrium phase [3]. While a contact time of 60 min is quite sufficient for the sorption experiments following.

### Sorbent rate constant

According to the literature, the first-order kinetic model given by Lagergren and the Ho's pseudo-second-order model are the most commonly used to provide the mechanism involved in the sorption process [43].

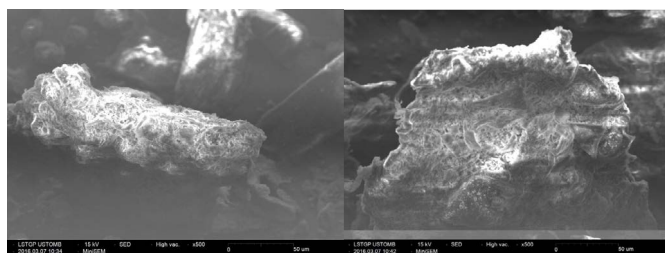


Figure 1 SEM image of the PBCF surface.

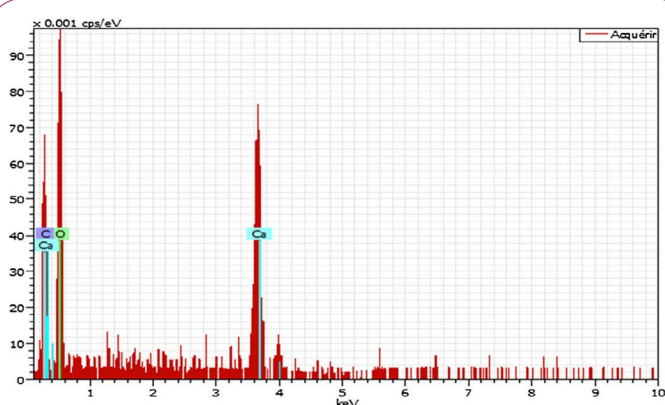


Figure 2 EDS microanalysis of the PBCF.

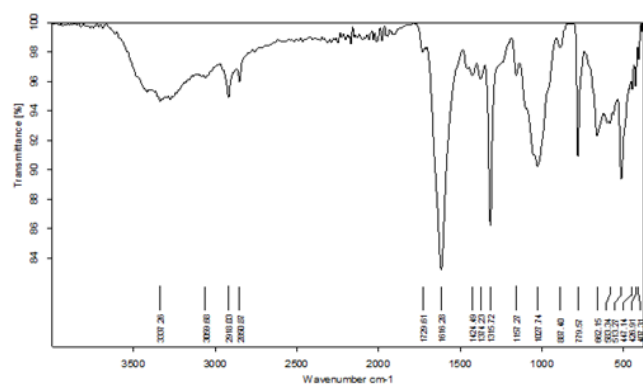


Figure 3 FTIR spectrum of PBCF.

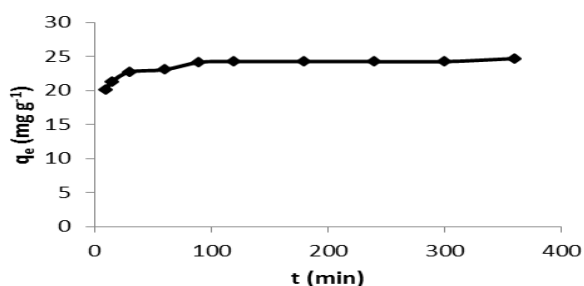


Figure 4 Effect of contact time on MB sorption by PBCF.

The Lagergren's first order model [43] is expressed by the following linear equation:

$$\log (q_e - q_t) = \log q_e - (k_1 / 2.303) t \quad (2)$$

Where  $q_e$  and  $q_t$  are the amounts ( $\text{mg g}^{-1}$ ) of sorbed dye at instant  $t$  and at equilibrium respectively and  $k_1$  ( $\text{l min}^{-1}$ ) is the rate constant of sorption ( $\text{min}^{-1}$ ).

The Ho's pseudo-second-order model [43] is expressed by the linear formula (3):

$$t/q_t = 1/K_2 q_e^2 + (1/q_e) t \quad (3)$$

$K_2$  ( $\text{g mg}^{-1} \text{min}^{-1}$ ) is the pseudo-second-order rate constant.

The results of this work did not fit the Lagergren's first order model, however the good correlation of the plot (Figure 5) with the experimental results indicate that the sorption of and MB Follow the pseudo second order kinetics. This model is frequently used in several works in the same field [3,43].

The parameters of the Ho's pseudo-second-order model grouped in Table 1 shows a good determination coefficient value (0.99). Moreover the experimental and calculated values of the equilibrium removal capacity of MB onto PBCF were almost equivalent ( $q_e \approx q_e$  calculated). Same phenomena for MB removal in batch system have been described in the literature [44].

### Effect of sorbent mass

It was noted that the percentage of MB removal increases according the amount of PBCF mass (Figure 6). This finding is justified by the high number of reactive vacant sites the mass transfer and concentration gradient is high. These favour the transfer of MB solute to the external surface of sorbent and increase on its removal percentage [41]. This in term of economic and view the important MB removal capacity, 0.1 g of sorbent was selected for the experiences those suites.

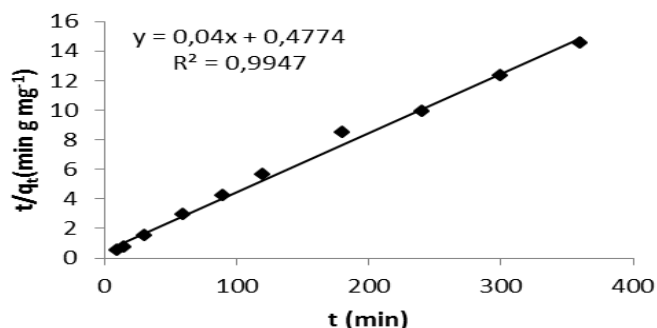


Figure 5 Pseudo-second-order model for MB removal by PBCF.

Table 1 Experimental and calculated rate constants for the second-order sorption.

| $q_e$ ( $\text{mg g}^{-1}$ ) | $K_2$ ( $\text{g m g}^{-1} \text{min}^{-1}$ ) | $q_e$ calculated ( $\text{mg g}^{-1}$ ) | $R^2$  |
|------------------------------|---|---|--------|
| 24,6975                      | 0,0034  | 25                                      | 0,9947 |

## Effect of pH

**Figure 7** shows that the highest sorption capacities were recorded at pH greater than  $pH_{ZPC}$  which gives a negative charge to the bio sorbent surface which leads to the increase of the fixation of the dye positively charged. However, the low values of this sorption capacity at pH less than 8 can be explained by the competition of protons with the solute at the available sites on the surface bio sorbent. The same interpretations have been reported by Bestani and Benderdouche et al onto an activated desert plant [37].

## Sorption isotherms

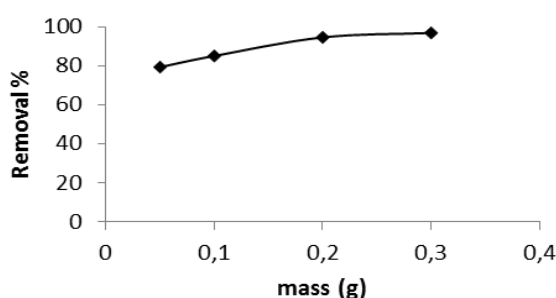
Sorption isotherms data are an important study in the design of the sorption in batch systems.

The Freundlich and Langmuir mathematical models are the most frequently used to predict the equilibrium between the liquid phase (free solution) and the solid phase (adsorbent-attached solute) concentrations [45].

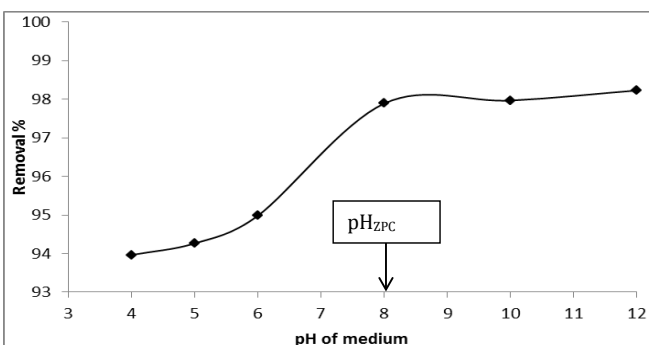
Freundlich isotherm model is represented by the following linear equation [46]:

$$\text{Log } q_e = 1/n \text{ log } C_e + \text{log } K_f \quad (4)$$

Where  $q_e$  ( $\text{mg g}^{-1}$ ) is the equilibrium sorption concentration of MB per gram of PBCF;  $C_e$  ( $\text{mg L}^{-1}$ ) is the concentration of the solute in solution at equilibrium;  $K_f$  and  $n$  are Freundlich constants which are related to the sorption capacity and the intensity of sorption. In addition the values of  $n$  have a relation with favourability of the sorption process [47,48]. The value  $1/n$  ranging between 0



**Figure 6** Dose PBCF effect on MB sorption.



**Figure 7** pH effect on MB sorption onto PBCF.

and 1 is a measure of sorption intensity or surface heterogeneity; over this value approach 0 the sorption is more heterogeneous [49].

Langmuir isotherm model is described by the following linear equation [50]:

$$C_e/q_e = C_e/Q_{\max} + 1/Q_{\max} K_L \quad (5)$$

$q_e$  ( $\text{mg g}^{-1}$ ) is the amount of solute adsorbed per unit dose of sorbent,  $C_e$  ( $\text{mg L}^{-1}$ ) is the dye equilibrium concentration,  $Q_{\max}$  ( $\text{mg g}^{-1}$ ) is the sorption capacity,  $K_L$  ( $\text{L/mg}$ ) is the Langmuir constant related to the adsorption energy. Moreover the equilibrium parameter (separation factor)  $R_L$  is among the most important factors discussed in this paper, is calculated by the following relation [51]:

$$R_L = 1/(1 + bC_0) \quad (6)$$

Where  $b$  is the Langmuir constant and  $C_0$  ( $\text{mg L}^{-1}$ ) is the highest solute concentration.

The isotherm to be either unfavorable ( $R_L > 1$ ), linear ( $R_L = 1$ ), favorable ( $0 < R_L < 1$ ) or irreversible ( $R_L = 0$ ).

According to the plots (**Figures 8 and 9**) and the parameters of Freundlich and Langmuir grouped in **Table 2**, the correlation coefficients indicate a correct fit for both mathematical models (0.9958 and 0.9983 for Freundlich and Langmuir model respectively), however the Langmuir isotherm (**Figure 9**) fits better the experimental results. The value of  $n$  (1.230) indicates that the sorption is favorable. Moreover the  $R_L$  value between 0 and 1 (0.0142) indicates that the sorption isotherm is favorable. The sorption capacity ( $222.22 \text{ mg g}^{-1}$ ) of MB onto PBCF is better than those of many sorbent cited in the literature (**Table 3**).

## Thermodynamic quantities

The thermal effect characterizing the bonding strength of the solute with active sites of the adsorbent was determined by the relationship between the distribution coefficient and the thermodynamic parameters.

The distribution coefficient was calculated by the following equation [3,40]:

$$\text{Ln } K_d = (\Delta S^\circ/R) - (\Delta H^\circ/RT) \quad (8)$$

$R$ , ideal gas constant.  $T$ , temperature (K).  $K_d$ , distribution coefficient (amounts of removed MB per gram of material divided by its concentration in the liquid phase).

The plot of  $\text{Ln}(K_d)$  versus  $1000/T$  gives a straight line, the slope and the intercept correspond to  $\Delta H^\circ/R$  and  $\Delta S^\circ/R$ , respectively.

The plot of  $\text{Ln}(K_d)$  versus  $1000/T$  for MB sorption is represented in **Figure 10**, and the thermodynamic quantities are regrouped in **Table 4**.

Negative value of  $\Delta H^\circ$  ( $-3.87 \text{ kJ.mol}^{-1}$ ) and  $\Delta G^\circ$  ( $-9.075$  at  $293^\circ\text{K}$ ,  $-9.25$  at  $303^\circ\text{K}$  and  $-9.43 \text{ kJ.mol}^{-1}$  at  $313^\circ\text{K}$ ) indicate that the sorption process was exothermic and almost spontaneous respectively. Positive value of  $\Delta S^\circ$  ( $17.76 \text{ J mol}^{-1} \text{K}^{-1}$ ) demonstrate the presence of a disorder at the solid-liquid interface during the sorption of the MB on the substrate [3].

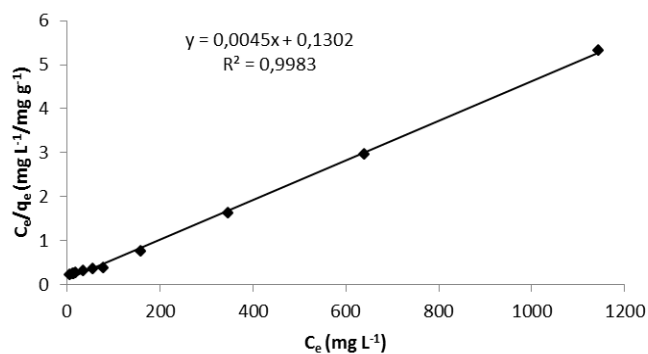


Figure 8 Langmuir isotherm of MB removal by PBCF.

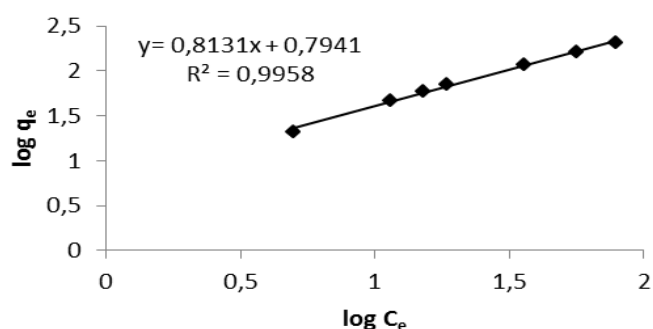


Figure 9 Freundlich isotherm of MB removal by PBCF.

Table 2 Langmuir and Freundlich constants for Methylene Blue sorption on PBCF.

| Langmuir constants              |                             |        | Freundlich constants |       |       |       |        |
|---------------------------------|-----------------------------|--------|----------------------|-------|-------|-------|--------|
| $Q_{max}$ (mg g <sup>-1</sup> ) | $K_L$ (L mg <sup>-1</sup> ) | $R^2$  | $R_L$                | 1/n   | n     | $K_F$ | $R^2$  |
| 222,2222                        | 0,0345                      | 0,9983 | 0,0142               | 0,813 | 1,230 | 2,212 | 0,9958 |

## Conclusion

This study showed that the Prickly bark of cactus fruit is considered as a low cost natural sorbent. A contact time of 60 min is quite sufficient for the sorption experiments. The sorption data and kinetic of Methylene blue onto PBCF fitted well the Ho's pseudo-second-order model with a good determination coefficient. The mathematical Langmuir and Freundlich models showed that the sorption data of Methylene blue onto the prepared bio-sorbent is favorable with a better sorption capacity 222.22 mg g<sup>-1</sup>), than those of many sorbent cited in the literature. The thermodynamic parameters and experimental data revealed that the sorption was, spontaneous, exothermic and feasible. EDS, FTIR, and iodine number studies indicate the presence of oxygenated functional groups with a high surface area. The percentage of methylene blue fixation increases according the amount of PBCF mass, this explained by the high number of reactive vacant sites the mass transfer and concentration gradient is high.

The highest sorption capacities were recorded at pH greater than pH<sub>ZPC</sub> which gives a negative charge to the bio sorbent surface which leads to the increase of the fixation of the dye positively charged.

Table 3 Comparison of sorption capacity of Methylene Blue onto activated carbons and other low-cost sorbents.

| Sorbent                           | Sorption capacity (mg g <sup>-1</sup> ) | Reference  |
|-----------------------------------|---|------------|
| inactivated desert plant          | 23                                      | [37]       |
| Pyrolyzed desert plant            | 53                                      | [37]       |
| Chemically activated desert plant | 130                                     | [37]       |
| Commercial activated carbon       | 200                                     | [37]       |
| Black stone cherries              | 321,75                                  | [52]       |
| Walnut shell                      | 315                                     | [53]       |
| Oil palm shell                    | 243,90                                  | [54]       |
| Hazelnut husks                    | 204                                     | [55]       |
| Plant leaf powder                 | 61,22                                   | [56]       |
| Wood apple rind                   | 40                                      | [57]       |
| <i>Caulerpa lentillifera</i>      | 417                                     | [58]       |
| <i>Sargassum muticum</i>          | 279,20                                  | [59]       |
| Dead macro fungi (F)              | 232,73                                  | [60]       |
| Dead macro fungi (P)              | 201,38                                  | [60]       |
| Algae Gelidium                    | 171                                     | [61]       |
| Algal waste                       | 104                                     | [61]       |
| Composite material                | 74                                      | [61]       |
| Duckweed                          | 144,93                                  | [62]       |
| Green alga                        | 40,20                                   | [63]       |
| The brown alga                    | 38,61                                   | [64]       |
| PBCF                              | 222,22                                  | this study |

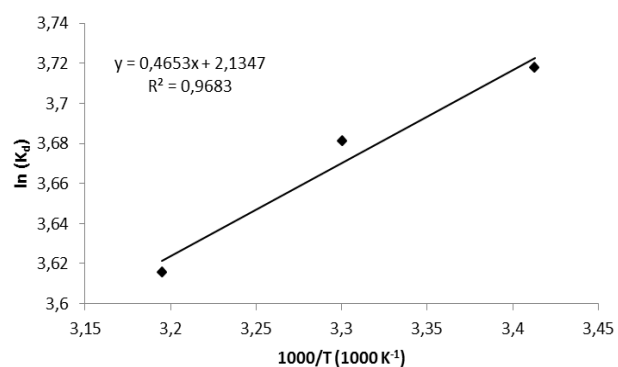


Figure 10 Plot of  $\ln K_d$  vs.  $1000/T$  for MB removal by PBCF.

Table 4 Thermodynamic parameters for Methylene Blue sorption on PBCF.

| $\Delta S^\circ$ (J mol <sup>-1</sup> K <sup>-1</sup> ) | $\Delta H^\circ$ (kJ mol <sup>-1</sup> ) | $\Delta G^\circ$ (kJ mol <sup>-1</sup> ) |       |       |
|---|--|--|-------|-------|
|   |  | 293°K                                    | 303°K | 313°K |
| 17,76   | -3,87                                    | -9,07                                    | -9,25 | -9,43 |

## References

- 1 Yagub MT, Sen TK, Afroze S, Ang HM (2009) Dye and its removal from aqueous solution by adsorption: A review. *Adv in Coll and Intere Sci* 209: 172-184.
- 2 Sakr F, Sennaoui A, Elouardi M, Tamimi M, Assabbane A (2015) Adsorption study of Methylene Blue on biomaterial using cactus. *J Mater Environ Sci* 6: 397-406.
- 3 Aziz A, Ouali MS, Elandaloussi E, De Menorval LC, Lindheimer M (2009) Chemically modified olive stone: A low-cost sorbent for heavy metals and basic dyes removal from aqueous solutions. *J Hazard Mater* 163: 441-447.
- 4 Esmaili S, Nasser SR, Atash-Dehghan R (2003) Adsorption of Lead and Zinc ions from aqueous solutions by Volcanic Ash Soil (VAS) Proc of the 8th Intern Confon Envir Sci and Technol 8-10.
- 5 Albert M, Lessin MS, Gilchrist BF (2003) Methylene blue: dangerous dye for neonates. *J Pediatr Surg* 38: 1244-1245.
- 6 Gillman PK (2011) CNS toxicity involving methylene blue: the exemplar for understanding and predicting drug interactions that precipitate serotonin toxicity. *J Psychopharmacol* 25: 429-436.
- 7 Belaroui K, Seghier A, Hadjel M (2014) Synthesis of activated carbon based on apricot stones for wastewater treatment. *Desalin Water Treat* 52: 1422-1433.
- 8 Kovalova L, Hansruedi S, Von Gunten U, Eugster J, Hagenbuch M, et al. (2013) Elimination of micropollutants during post-treatment of hospital wastewater with powdered activated carbon, ozone, and UV. *Sci Technol* 47: 7899-7908.
- 9 Ruhl AS, Zietzschmann F, Hilbrandt I, Meinel F, Altmann J, et al. (2014) Targeted testing of activated carbons for advanced wastewater treatment. *J Chem Eng* 257: 184-190.
- 10 Khandegar V, Saroha AK (2013) Electrocoagulation for the treatment of textile industry effluents: A review. *J Environ Manag* 128: 949-963.
- 11 Liang CZ, Sun SP, Li FY, Ong YK, Chung TS (2014) Treatment of highly concentrated wastewater containing multiple synthetic dyes by a combined process of coagulation/flocculation and nanofiltration. *J Membr Sci* 469: 306-315.
- 12 Ge Q, Wang P, Wan C, Chung TS (2012) Polyelectrolyte-promoted forward osmosis membrane distillation (FOeMD) hybrid process for dye wastewater treatment. *Environ Sci Technol* 46: 6236-6243.
- 13 Zhao P, Gao B, Xu S, Kong J, Ma D, et al. (2015) Polyelectrolyte-promoted forward osmosis process for dye wastewater treatment: Exploring the feasibility of using polyacrylamide as draw solute. *Chem Eng J* 264: 32-38.
- 14 Punzi M, Nilsson F, Anbalagan A, Svensson BM, Jeonsson K, et al. (2015) Combined anaerobic ozonation process for treatment of textile wastewater: removal of acute toxicity and mutagenicity. *J Hazard Mater* 292: 52-60.
- 15 Aouni A, Fersi C, Cuartas-Urbe B, Bes-Pía A, Alcaina-Miranda MI, et al. (2012) Reactive dyes rejection and textile effluent treatment study using ultrafiltration and nanofiltration processes. *Desalination* 297: 87-96.
- 16 Ong YK, Li FY, Sun SP, Zhao BW, Liang CZ, et al. (2014) Nanofiltration hollow fiber membranes for textile wastewater treatment: lab-scale and pilotscale studies. *Chem Eng Sci* 114: 51-57.
- 17 Zhang L, Xu L, He J, Zhang (2014) Preparation of Ti/SnO<sub>2</sub>-Sb electrodes modified by carbon nanotube for anodic oxidation of dye wastewater and combination with nanofiltration. *Electrochim J Electrochim Acta* 117: 192-201.
- 18 Gupta VK, Jain R, Mittal A, Saleh TA, Nayak A, et al. (2012) Photocatalytic degradation of toxic dye amaranth on TiO<sub>2</sub>/UV in aqueous suspensions. *Mater Sci Eng* 32: 12-17.
- 19 Wang A, Li X, Zhao Y, Wu W, Chen J (2014) Preparation and characterizations of Cu<sub>2</sub>O/reduced graphene oxide nanocomposites with high photo-catalytic performances. *Powder Technol* 261: 42-48.
- 20 Bhatnagar R, Joshi H, Mall ID, Srivastava VC (2014) Electrochemical treatment of acrylic dye-bearing textile wastewater: optimization of operating parameters. *Desalination Water Treat* 52: 111-122.
- 21 Aquino JM, Rocha-Filho RC, Ruotolo LA, Bocchi N, Biaggio SR (2014) Electrochemical degradation of a real textile wastewater using b-PbO<sub>2</sub> and DSA<sup>®</sup> anodes. *Chem Eng J* 251: 138-145.
- 22 Ghosh A, Dastidar MG, Sreekrishnan TR (2014) Biosorption and biodegradation of chromium complex dye using *Aspergillus* species. *J of Hazar Toxic Radioact Waste* 18: 4014-4022.
- 23 Choi Y, Park B, Cha DK (2015) Enhancing biological treatment of dye wastewater with zero-valent iron. *Korean J Chem Eng* 32: 1812-1817.
- 24 Bilal M, Asgher M, Parra Saldivar S, Hu H, Wang W, et al. (2017) Immobilized ligninolytic enzymes: An innovative and environmental responsive technology to tackle dye-based industrial pollutants-A review. *Science of The Total-Environ* 576: 646-659.
- 25 Chatha SAS, Asgher M, Iqbal HMN (2017) Enzyme-based solutions for textile processing and dye contaminant biodegradation-a review. *Environ Sci Pollut Res* 1-14.
- 26 Bilal M, Asgher M, Iqbal HMN, Hu H, Zhang X (2017) Bio-based degradation of emerging endocrine-disrupting and dye-based pollutants using cross-linked enzyme aggregates. *Environ Sci Pollut Res*.
- 27 Bilal M, Iqbal HMN, Hu H, Wang W, Zhang X (2017) Development of horseradish peroxidase-based cross-linked enzyme aggregates and their environmental exploitation for bioremediation purposes. *J of Environ Manag* 188: 137-143.
- 28 Bilal M, Iqbal HMN, Hu H, Wang W, Zhang X (2017) Enhanced biocatalytic performance and dye degradation potential of chitosan-encapsulated horseradish peroxidase in a packed bed reactor system. *Sci of The Total Environ* 575: 1352-1360.
- 29 Asgher M, Shah SAH, Iqbal HMN (2016) Statistical correlation between ligninolytic enzymes secretion and Remazol Brilliant Yellow-3GL dye degradation potential of *Trametes versicolor* IBL-04. *Water Environment Research* 88: 338-345.
- 30 Chatha SAS, Asgher M, Iqbal HMN, Ali S (2016) A Novel Enzymatic Stripping of CI Reactive Black B Dyed Knitted Textiles Fabric as an Environmentally Responsible Technology. *Electronic Journal of Biology* 12: 276-281.
- 31 Asgher M, Yasmeen K, Iqbal HMN (2013) Enhanced decolorization of Solar brilliant red 80 textile dye by an indigenous white rot fungus *Schizophyllum commune* IBL-06. *Saudi J of biological Sci* 20: 347-352.
- 32 Rafatullah M, Sulaiman O, Hashim R, Ahmad A (2010) Adsorption of methylene blue on low-cost adsorbents: a review. *J Hazard Mater* 177: 70-80.
- 33 Ekrami E, Dadashian F, Arami M (2015) Adsorption of methylene blue by waste cotton activated carbon: equilibrium, kinetics, and thermodynamic studies. *Desalination Water Treat* 1-11.
- 34 Abdel-Ghani NT, El-Chaghaby GA, Zahran EM (2015)

- Pentachlorophenol (PCP) adsorption from aqueous solution by activated carbons prepared from corn wastes. *Int J Environ Sci Technol* 12: 211-222.
- 35 Li J, Ng DH, Song P, Kong C, Song Y, et al. (2015) Preparation and characterization of high-surface-area activated carbon fibers from silkworm cocoon waste for congo red adsorption. *Biomass Bioenergy* 75: 189-200.
- 36 Malkoc E, Nuhoglu Y (2006) Removal of Ni(II) ions from aqueous solutions using waste of tea factory: Adsorption on a fixed-bed column. *J Hazard* 135: 328-336.
- 37 Bestani B, Benderdouche N, Benstaali B, Belhakem M, Addou A (2008) Methylene blue and iodine adsorption onto an activated desert plant. *Bioresour Technol* 99: 8441-8444.
- 38 ASTM D4607-94 (1999) Standard Test Method for Determination of Iodine Number of Activated Carbon.
- 39 Liu H, Ning W, Cheng P, Zhang J, Wang Y, et al. (2013) Evaluation of animal hairs-based activated carbon for sorption of norfloxacin and acetaminophen by comparing with cattail fiber-based activated carbon. *J Anal Appl Pyrolysis* 101: 156-165.
- 40 Shrestha S, Son G, Lee SH, Lee TG (2013) Isotherm and thermodynamic studies of Zn (II) adsorption on lignite and coconut shell-based activated carbon fiber. *Chemosphere* 92: 1053-1061.
- 41 Ghaedi M, Shojaeipour E, Ghaedi AM, Reza S (2015) Isotherm and kinetics study of malachite green adsorption onto copper nanowires loaded on activated carbon: Artificial neural network modeling and genetic algorithm optimization. *Mol Biomol Spectrosc* 142: 135-149.
- 42 Liua H, Gaoa Q, Daib P, Zhanga J, Zhanga C (2013) Preparation and characterization of activated carbon from lotus stalk with guanidine phosphate activation: Sorption of Cd(II). *J Anal Appl Pyrolysis* 102: 7-15.
- 43 Ho YS, McKay G (1999) Pseudo-second order model for sorption processes, *Biochem* 34: 451-465.
- 44 Kavitha D, Namasivayam C (2007) Experimental and kinetic studies on methylene blue adsorption by coir pith carbon. *Bioresour Technol* 98: 14-21.
- 45 Benderdouche N, Bestani B, Benstaali B, Derriche Z (2003) Enhancement of the adsorptive properties of a desert *Salsola vermiculata* species. *Ads Sci & Tech* 221: 739-750.
- 46 Freundlich HMF (1906) Over the adsorption in solution. *J Phys Chem* 57: 385-470.
- 47 Pollard SJT, Sollars CJ, Perry R (1991) A low cost adsorbent from spent bleaching earth. I-the selection of an activation procedure. *J Chem Technol Biotechnol* 50: 265-275.
- 48 Yao Y, Xu F, Chen M, Xu Z, Zhu Z (2010) Adsorption behavior of methylene blue on carbon nanotubes. *Bioresour Technol* 101: 3040-3046.
- 49 Haghseresht F, Lu G (1998) Adsorption characteristics of phenolic compounds onto coal-reject-derived adsorbents. *Energy Fuels* 12: 1100-1107.
- 50 Langmuir I (1918) The adsorption of gases on plane surfaces of glass, mica and platinum. *J Am Chem Soc* 40: 1361-1403.
- 51 Hall K, Eagleton L, Acrivos A, Vermeulen T (1966) Pore-and solid-diffusion kinetics in fixed-bed adsorption under constant-pattern conditions. *Ind Eng Chem Fundam* 5: 212-223.
- 52 Rodríguez Arana JMR, Mazzoco RR (2010) Adsorption studies of methylene blue and phenol onto black stone cherries prepared by chemical activation. *J Hazard Mater* 180: 656-661.
- 53 Yang J, Qiu K (2010) Preparation of activated carbons from walnut shells via vacuum chemical activation and their application for methylene blue removal. *Chem Eng J* 165: 209-217.
- 54 Tan I, Ahmad A, Hameed B (2008) Adsorption of basic dye using activated carbon prepared from oil palm shell: batch and fixed bed studies, *Desalination* 225: 13-28.
- 55 Ozer C, Imamoglu M, Turhan Y, Boysan F (2012) Removal of methylene blue from aqueous solutions using phosphoric acid activated carbon produced from hazelnut husks., *Toxicol Environ Chem* 94: 1283-1293.
- 56 Gunasekar V, Ponnusami V (2012) Kinetics, equilibrium, and thermodynamic studies on adsorption of methylene blue by carbonized plant leaf powder. *J Chem* 13: 1-6.
- 57 Malarvizhi R, Ho YS (2010) The influence of pH and the structure of the dye molecules on adsorption isotherm modeling using activated carbon. *Desalination* 264: 97-101.
- 58 Marungrueng K, Pavasant P (2007) High performance biosorbent (*Caulerpa lentillifera*) for basic dye removal. *Bioresour Technol* 98: 1567-1572.
- 59 Rubin E, Rodriguez P, Herrero R, Cremades J, Barbara I (2005) Removal of methylene blue from aqueous solutions using as biosorbent *Sargassum muticum*: an invasive macroalga in Europe. *J Chem Technol Biotechnol* 80: 291-298.
- 60 Maurya NS, Mittal AK, Cornel P, Rother E (2006) Biosorption of dyes using dead macro fungi: effect of dye structure, ionic strength and pH. *Bioresour Technol* 97: 512-521.
- 61 Vilar VJP, Botelho C, Boaventura RAR (2007) Methylene blue adsorption by algal biomass based materials: biosorbents characterization and process behaviour. *J Hazard Mater* 147: 120-132.
- 62 Waranusantigul P, Pokethitiyook P, Kruatrachue M, Upatham US (2003) Kinetics of basic dye (methylene blue) biosorption by giant duckweed (*Spirodela polyrrhiza*). *Environ Pollut* 125: 385-392.
- 63 El Sikaily A, Khaled A, Nemr AE, Abdelwahab O (2006) Removal of methylene blue from aqueous solution by marine green alga *Ulva lactuca*. *Chem Ecol* 22: 149-157.
- 64 Caparkaya D, Cavas L (2008) Biosorption of methylene blue by a brown alga *Cystoseira barbatula* Kutzing. *Acta Chim Slov* 55: 547-553.